

BASS

GOURMET RACE

(FROM "KIRBY SUPER STAR" FOR SNES)

BY JUN ISHIKAWA

ARRANGED BY PETER C. DAVIDSON

BIG BAND SWING ♩ = 180

Sheet music for Bass, featuring measures 1 through 36. The key signature is B-flat major (two flats). The tempo is marked as BIG BAND SWING ♩ = 180. The music is arranged in a 4/4 time signature.

Measures 1-4: Measure 1 has a *mf* dynamic marking. Chords: A^b6, G7, C^M (marked with a circled A), F^M7, C^M7.

Measures 5-8: Chords: A^b6, G7, C^M.

Measures 9-12: Chords: F^M7, C^M7.

Measures 13-16: Chords: A^b6, G7, C^M.

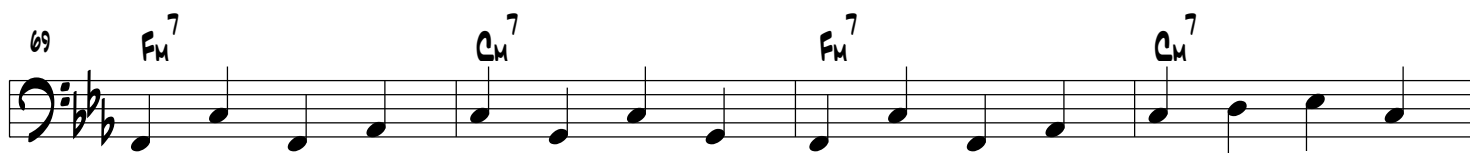
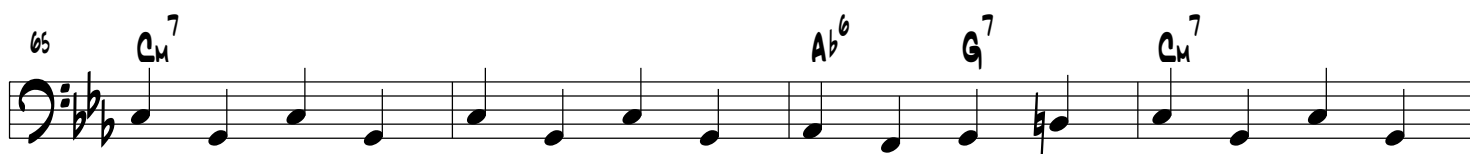
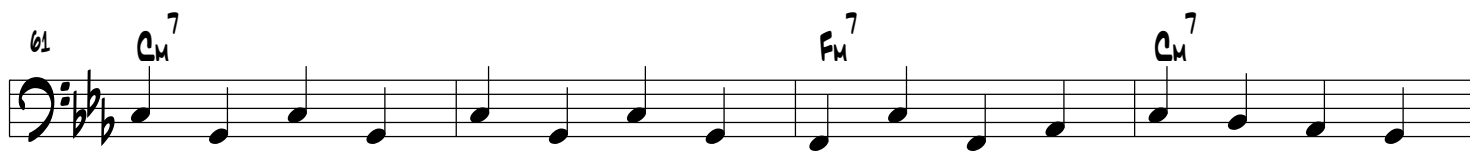
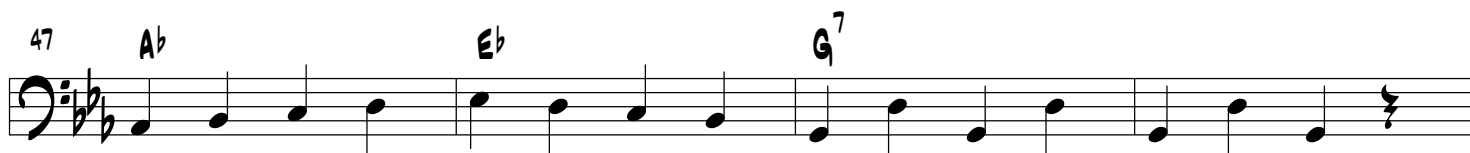
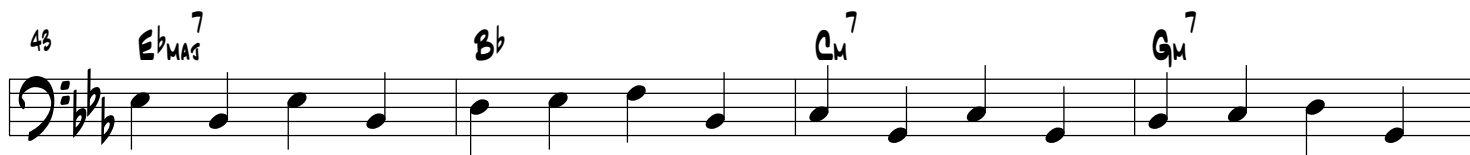
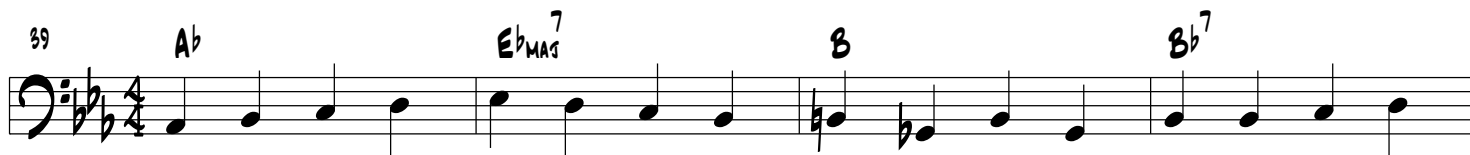
Measures 17-20: Chords: F^M7, C^M7 (marked with a circled B).

Measures 21-24: Chords: G7, C^M.

Measures 25-28: Chords: F^M7, C^M7.

Measures 29-32: Chords: A^b6, G7, C^M.

Measures 33-36: Chords: E^b (marked with a circled C), B^b, C^M7, G^M7.



BASS

77 F_{M7} C_{M7} F_{M7} C_{M7}

81 F_{M7} C_{M7} A_{b6} $G7$ C_{M7}

85 E_b B_b C_{M7} G_{M7}

89 A_b $E_{b_{MAG}}^7$ B B_{b7}

93 $E_{b_{MAG}}^7$ B_b C_{M7} G_{M7}

97 A_b E_b $G7$

101 **E**

ff

A^b6

G⁷

103 **C^M7**

F^M7

C^M7

107 **C^M7**

A^b6

G⁷

C^M7

111 **C^M7**

F^M7

C^M7

G⁷

115 **C^M7**

A^b6

G⁷

C^M7

119 **E** **F^M7**

fff

C^M7

F^M7

C^M7

C

123 **F^M7**

C^M7

G⁷

C^M7

127 **F^M7**

C^M7

F^M7

C^M7

131 **F^M7**

C^M7

A^b6

G⁷

C^M7

BASS

135 G^7 E^b B^b C^7 G^7

ff

139 A^b E^b_{MA7} B B^b^7

143 E^b_{MA7} B^b C^7 G^7

147 A^b E^b G^7

mf

151 G^7 C^7

fff